



PROBLEM STATEMENTS

(Department of Architecture)

PROBLEM 1.

VIGYAAN, AAVARTAN '18



Canopy Design

Bicycle online rentals are becoming rage across the world and our institute is lucky to incorporate a smart, affordable and, environmental friendly cycle sharing services for short trips around our city.

Design a canopy for the cycle stand near main building that features light weight materials, structure and easy installation.

Specifications:
Area: 6mX2.5m
Site: near main building NIT Raipur
Height: max. 2.5m



Site Location

SUBMIT THE
ABSTRACT

MAKE TEAM OF
UP TO THREE
MEMBERS

GIVE THE
PRESENTATION

SUBMIT
DRAWINGS AND
MODEL



PROBLEM 2.

VIGYAAN, AAVARTAN '18

3f

O.A.T Renovation

There are places in the campus that are not recognized to their full potential.

An open air theatre is an amphitheatre for events outside rather than in the building. The O.A.T. in the roof of the architecture department is one such space that can be brought into use. The idea is to understand the potential and justify the space through your design interventions.

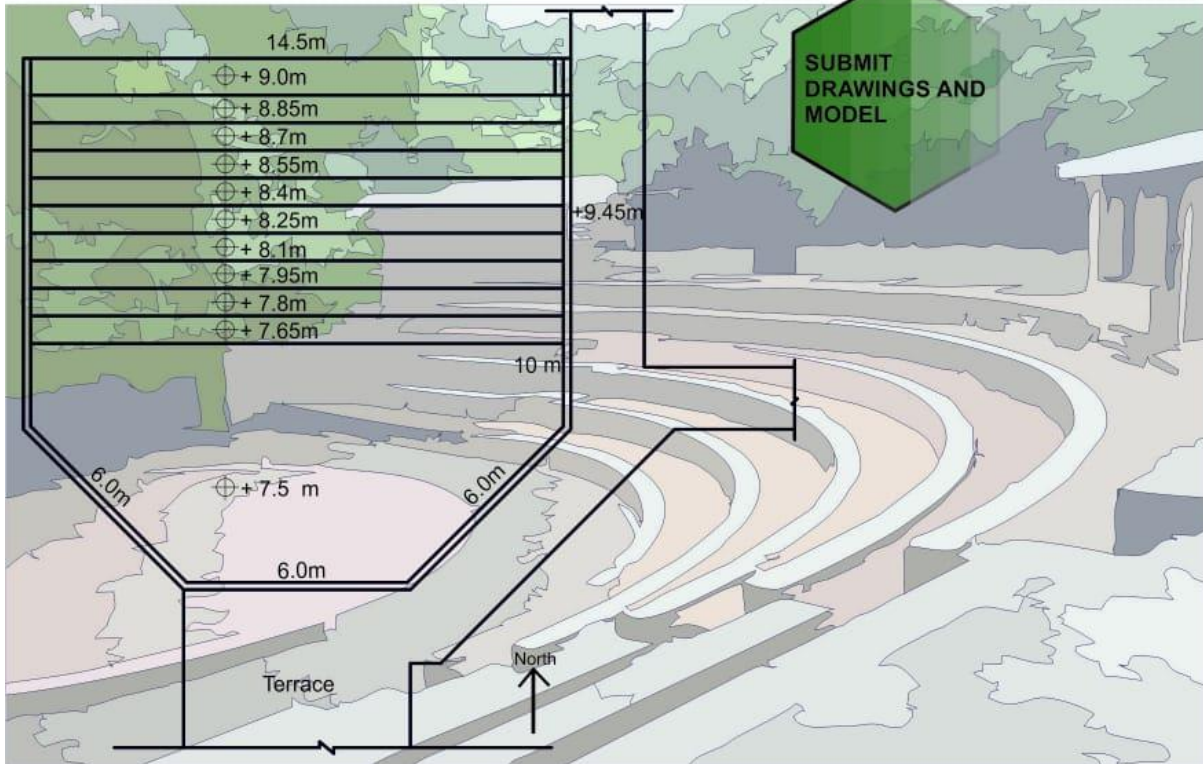
Required drawings to be submitted in scale (plan, section, elevation)

SUBMIT THE ABSTRACT

MAKE TEAM OF UP TO THREE MEMBERS

GIVE THE PRESENTATION

SUBMIT DRAWINGS AND MODEL



PROBLEM 3.

VIGYAAN, AAVARTAN '18



Transformable Seating

Design transformable seating that are comfortable and mobile and that can be placed anywhere in the campus or within the departmental buildings.

- The choice of material should be justified.
- Concept behind the model.
- Provide illustrations to show mechanism and working of the product.
- Required drawings to be submitted in scale (plan, section, elevation).

SUBMIT THE
ABSTRACT

MAKE TEAM OF
UP TO THREE
MEMBERS

GIVE THE
PRESENTATION

SUBMIT
DRAWINGS AND
MODEL



PROBLEM 4.

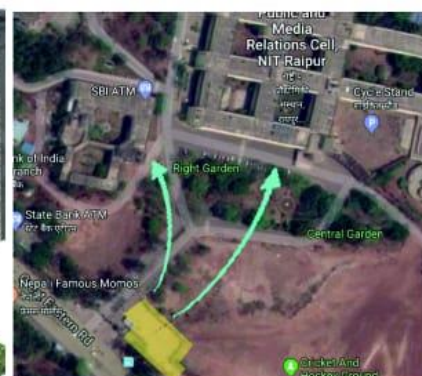
VIGYAAN, AAVARTAN '18

Passage Design

The task is to design a corridor connecting Parking to entrance of main building and architecture department.

The corridor should have enough provisions to safeguard the pedestrians from harsh weather conditions throughout the year

Special emphasis must be given on the user movement of pedestrian so as to minimise the hindrance



PROBLEM 5.

VIGYAAN, AAVARTAN '18

3f

Anywhere shed

Long Discussions and Multi-Disciplinary Collaborations are always been a tool that catalyses process of learning and broadens up students approach to find an appropriate solution of a problem.

The challenge is to design a module to promote interdisciplinary interaction of the students which can be placed strategically to cater huge crowds for a long period.

- A shed to protect from harsh weather conditions.
- Space that can hold up to 30 people.
- Sufficient sitting to be provided.
- Shed and Sittings should be designed so as to obtain maximum visual and audio connectivity.
- To encourage inter branch dialogues and Discussions.

SUBMIT THE
ABSTRACT

MAKE TEAM OF
UP TO THREE
MEMBERS

GIVE THE
PRESENTATION

SUBMIT
DRAWINGS AND
MODEL

